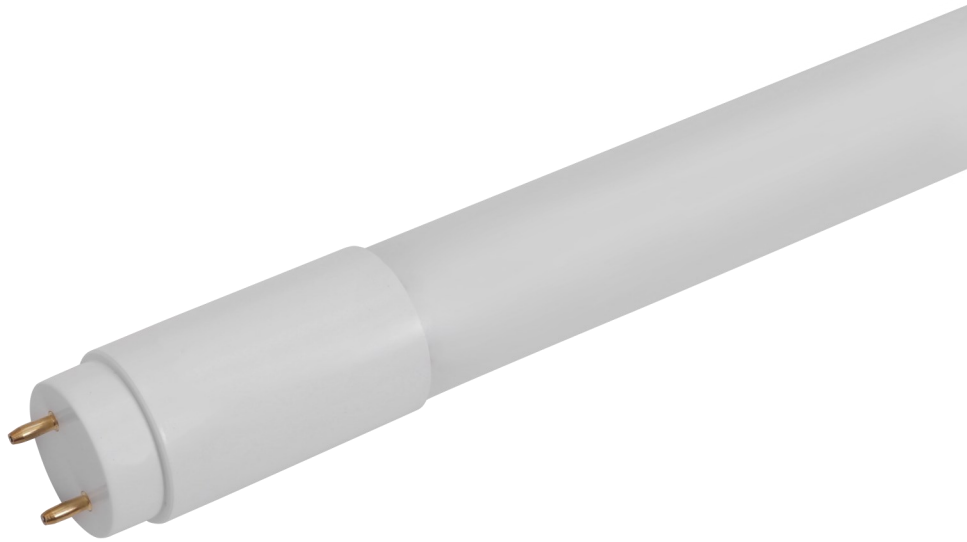




LED BYPASS MODE TUBES



PRODUCT FEATURES

- Retrofit / Bypass Mode - Single & Double Ended (Type B)
- Existing Fixture is Wired to Bypass the Ballast
- Film Coated Shatter Resistant Glass Tube
- Frosted
- Dimming Capable with Approved Dimmer
- 120-277 Voltage Rating, PF > 0.9
- CRI = 83
- Medium Bi-Pin / G13 Mounting
- NSF Certified
- DLC Listed
- UL Certified
- 50,000 Hour Lifetime Rating
- 5-Year Limited Warranty
- Operating Temperature Range: -4°F to 113°F (-20°C to 45°C)

PRODUCT SPECIFICATIONS

MODEL	ITEM #	POWER (W)	LUMENS (LM)	CCT (K)	LENGTH (IN)	EFFICIENCY (Lm/W)	BEAM ANGLE
CLT97-8WB6N-40K-2FT	L8WT84KBCL97	8	1200	4000	23.19	150	220°
CLT97-8WB6N-50K-2FT	L8WT85KBCL97	8	1200	5000	23.19	150	220°

